

MODEL 70510 DOUBLE ENDED SHEAR BEAM LOAD CELL

FEATURES:

- 1K to 125K pounds capacities
- * Low profile design
- Nickel/Chrome plated
high alloy tool steel
- * Complete environmental protection
- Stainless steel version available
- Factory Mutual (F.M.) Approved †

DESCRIPTION:

The Model 70510 double ended shear beam is designed primarily for tank and hopper weighing applications. It is normally used in conjunction with the WM-IV Weigh Module. The cell is environmentally sealed against moisture and plated with Nickel/Chrome to protect it against corrosion. There is also a stainless steel version, SS70510, available for food processing, pharmaceutical applications or hostile environments.

PERFORMANCE SPECIFICATIONS

Standard Capacities (lbs.):	1K, 1.5K, 2K, 2.5K, 3K, 5K, 10K, 15K 20K, 25K, 50K, 100K, 125K
Excitation Voltage:	10VDC - Maximum 15VDC
Rated Output:	3.0 mv/v \pm 1%
Non-Linearity:	< 0.03% FSO (Full Scale Output)
Hysteresis:	< 0.02% FSO
Non-Repeatability:	< 0.01% FSO
Zero Balance:	\pm 1.0% FSO
Bridge Resistance:	700 \pm 7.0 ohms
Safe Overload:	150% of Rated Capacity
Temperature:	
Compensated Range:	0-150 deg. F
Effect on Output:	< 0.0008% FSO/deg. F
Effect on Zero:	< 0.0011% FSO/deg. F
Finish:	Electroless Nickel/Chrome Plated



CAPACITY LBS.	A	B	C	D	E	F	G	J
1K - 5K	7.50	6.25	1.24	1.24	.62	1.12	1.24	.50
10K - 25K	8.75	7.50	1.94	1.44	.62	1.62	1.99	.81
50K - 75K	13.50	11.50	2.94	2.44	1.00	3.25	3.00	1.31

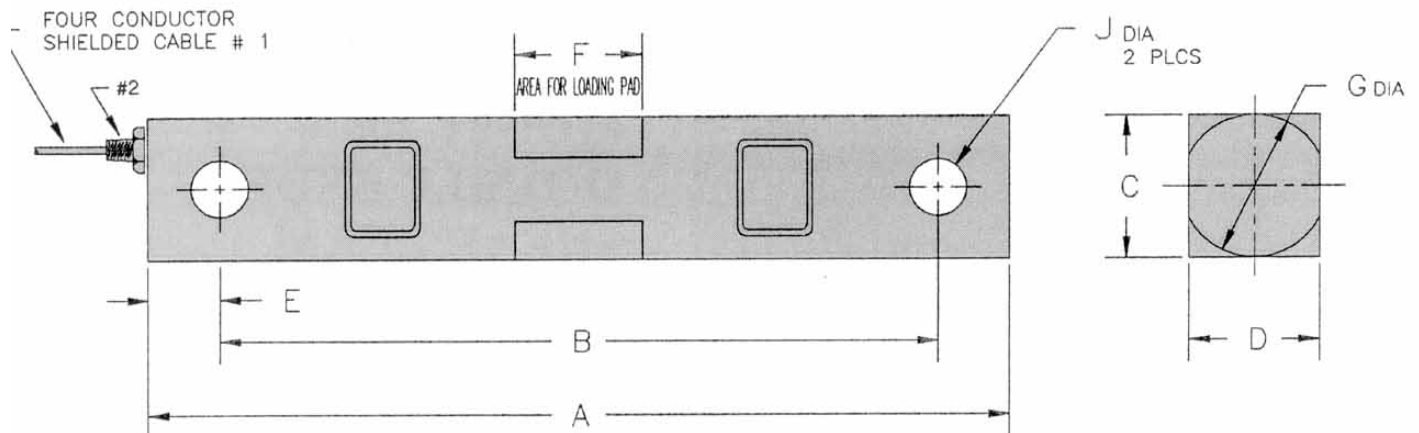
ELECTRICAL TERMINATION

INPUT OUTPUT SHIELD

RED (+) GREEN (+)

BLACK (-) WHITE (-)

COMPRESSION POSITIVE



- NOTE;
- #1. STD WIRING
 - #2. 1/4-NPT CONDUIT FITTING IN 1K TO 25K
1/2-NPT CONDUIT FITTING IN 50K TO 75K
 - #3. DIMENSIONS SHOWN ARE IN INCHES
 - #4. MATERIAL : TOOL STEEL - NICKEL/CHROME PLATE
 - #4. 30 FEET CABLE LENGTH, POLYURATHANE JACKET
OTHER LENGTH AVAILABLE PER SPECIAL ORDER

† Factory Mutual Systems approved as intrinsically safe when installed per F.M. approved installation drawing. Contact ARTECH sales department for details.