

LOADMASTER[®]

SERIES M^{T.M.}

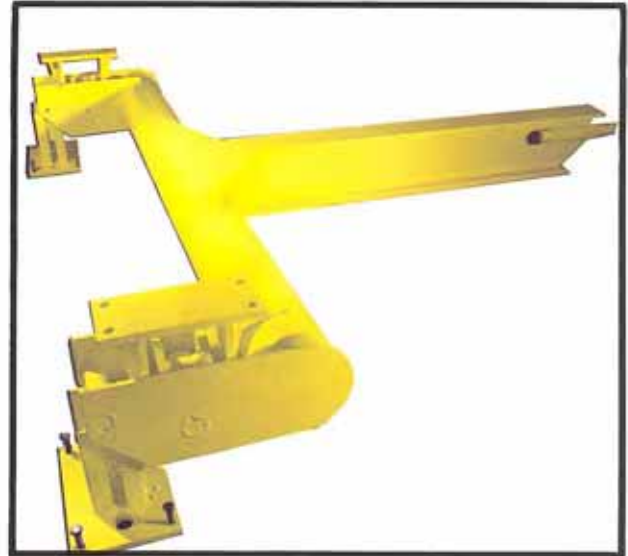
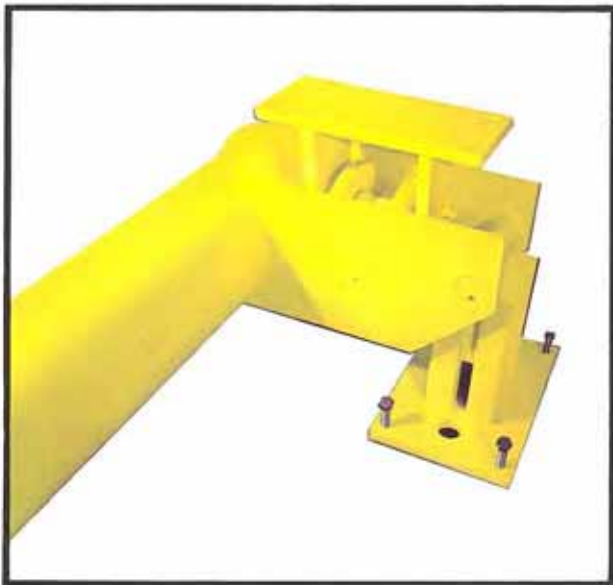


Mechanical Motor Truck Scale



GENERAL

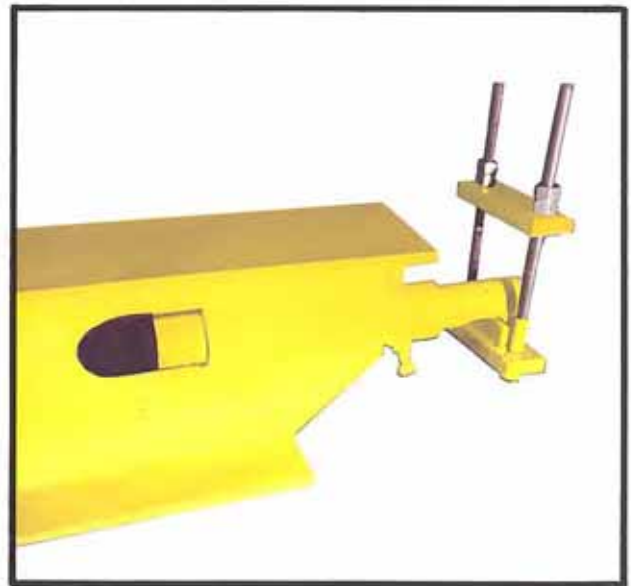
The LOADMASTER Series M is a welded steel pipe lever design consisting of two sections or more. The levers are weldments of heavy steel tubing, steel plates and structural steel shapes. The initial load is suspended from the center of the main lever bearings and each section of main or primary levers are directly connected



to a longitudinal transverse lever, thence to the indicating element.

MAIN SUSPENSION

The heart of the LOADMASTER Series M is a remarkably strong double link suspension system. The system consists of a steel load bearing block having a self-aligning steel bearing resting upon the main lever load knife edges. We've eliminated the problems associated with conventional pivot design by creating a pivot that can be removed and replaced quickly. Those days of down time with conventional pivot design are a thing of the past. The Series M suspension system acts as a shock absorber, permitting the immediate return of the scale to a free weighing position after the





disturbance of loading or unloading. When you need dependable performance and accuracy, smoother operation, and efficient field service, call on the LOADMASTER Series M to deliver it.

All bearings are mounted so as to obtain equal and continuous contact of the knife edges.

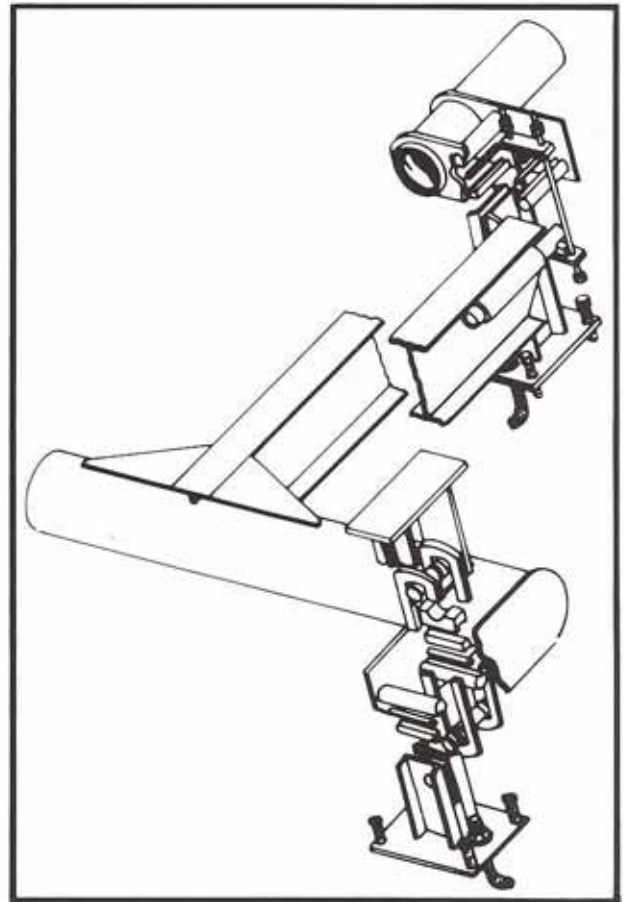
All connections are both vertically and horizontally adjustable to permit proper leveling and alignment of bearing blocks.

The nose irons are factory adjusted and marked. Ample adjustment is provided for years of reliable and accurate service.

All wear parts have been designed for easy field replacement.

Ample clearance has been provided between fixed and live parts of the lever system to insure good scale operation in the dirtiest applications.

The complete scale system is primed with a rust inhibitive zinc rich primer and finish coated with a durable weather resistant enamel.



WARRANTY

All LOADMASTER products are warranted against manufacturing defects for a period of one (1) year.

ACCURACY

Accuracy will be as set forth in NIST handbook 44 Class III L.



SPECIFICATIONS

Part Number	Qty of Sections	Capacity Gross/CLC	Platform size	Shipping weight
151-2201-x	2	30 tons/25 tons	10' x 10'	3,200#
-2202-x	2	30 tons/25 tons	10' x 12'	3,600#
-2203-x	2	30 tons/25 tons	12' x 10'	3,600#
-2204-x	2	30 tons/25 tons	20' x 10'	4,800#
-2205-x	2	30 tons/25 tons	22' x 10'	5,100#
-2206-x	2	30 tons/25 tons	24' x 10'	6,300#
-2207-x	2	30 tons/25 tons	30' x 10'	8,300#
-2208-x	2	30 tons/25 tons	34' x 10'	9,900#
151-4301-x	3	50 tons/30 tons	35' x 10'	9,000#
-4302-x	3	50 tons/30 tons	40' x 10'	10,200#
-4303-x	3	50 tons/30 tons	50' x 10'	13,900#
-4304-x	3	50 tons/30 tons	60' x 10'	16,900#
151-5401-x	4	60 tons/30 tons	50' x 10'	14,900#
-5402-x	4	60 tons/30 tons	60' x 10'	17,000#
-5403-x	4	60 tons/30 tons	70' x 10'	17,400#
151-6401-x	4	80 tons/40 tons	60' x 10'	17,500#
-6402-x	4	80 tons/40 tons	70' x 10'	20,200#
-6403-x	4	80 tons/40 tons	80' x 10'	24,200#
151-7501-x	5	100 tons/40 tons	70' x 10'	20,100#
-7502-x	5	100 tons/40 tons	80' x 10'	24,000#
-7503-x	5	100 tons/40 tons	90' x 10'	26,300#
-7503-x	5	100 tons/40 tons	100' x 10'	29,100#

NOTE: Additional sizes and capacities available along with custom designs. Please consult factory.



LOADMASTER®

SCALE MFG.

420 E. Lincoln Street • Findlay, OH 45840 • 419/422-4779 • FAX: 419/422-9036

Division of Holtgreven Scale & Electronics Corp.