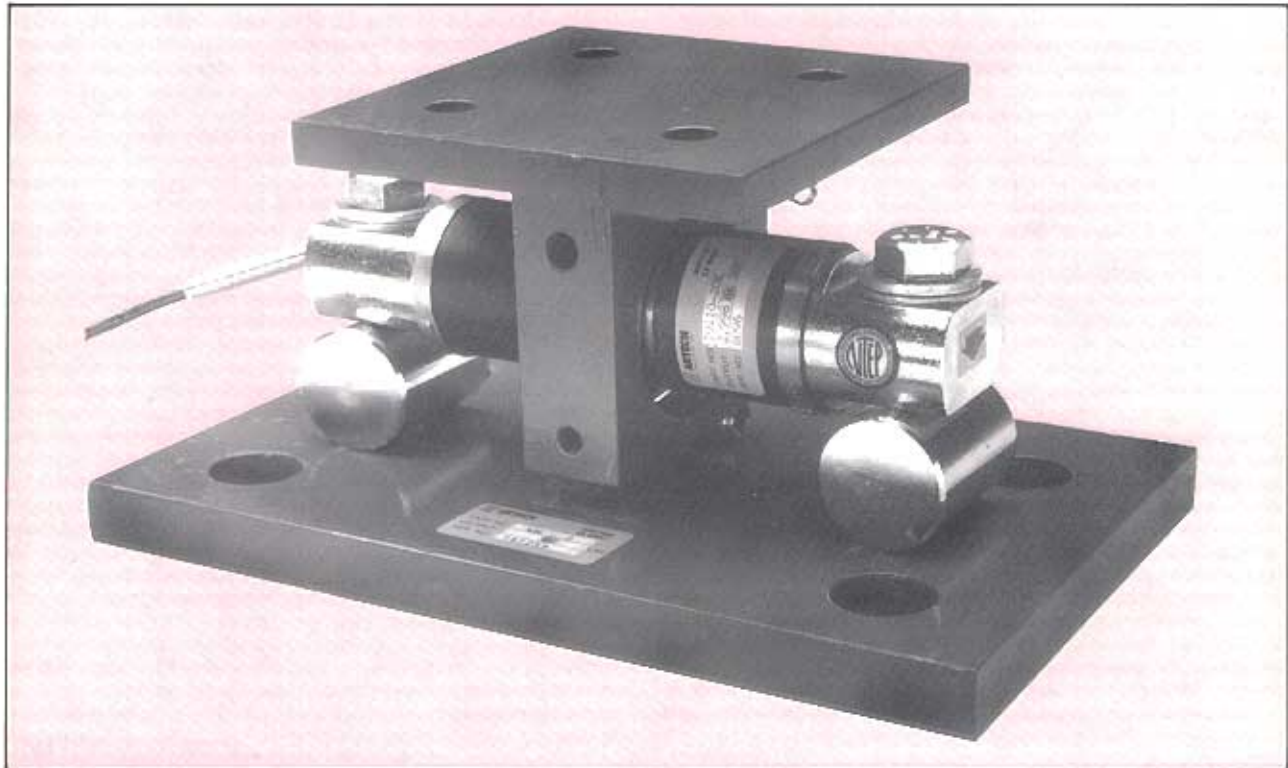


# WM-II

WEIGHING MODULE

DESIGNED TO UTILIZE  
DOUBLE ENDED BEAMS  
FOR TANK WEIGHING



## FEATURES:

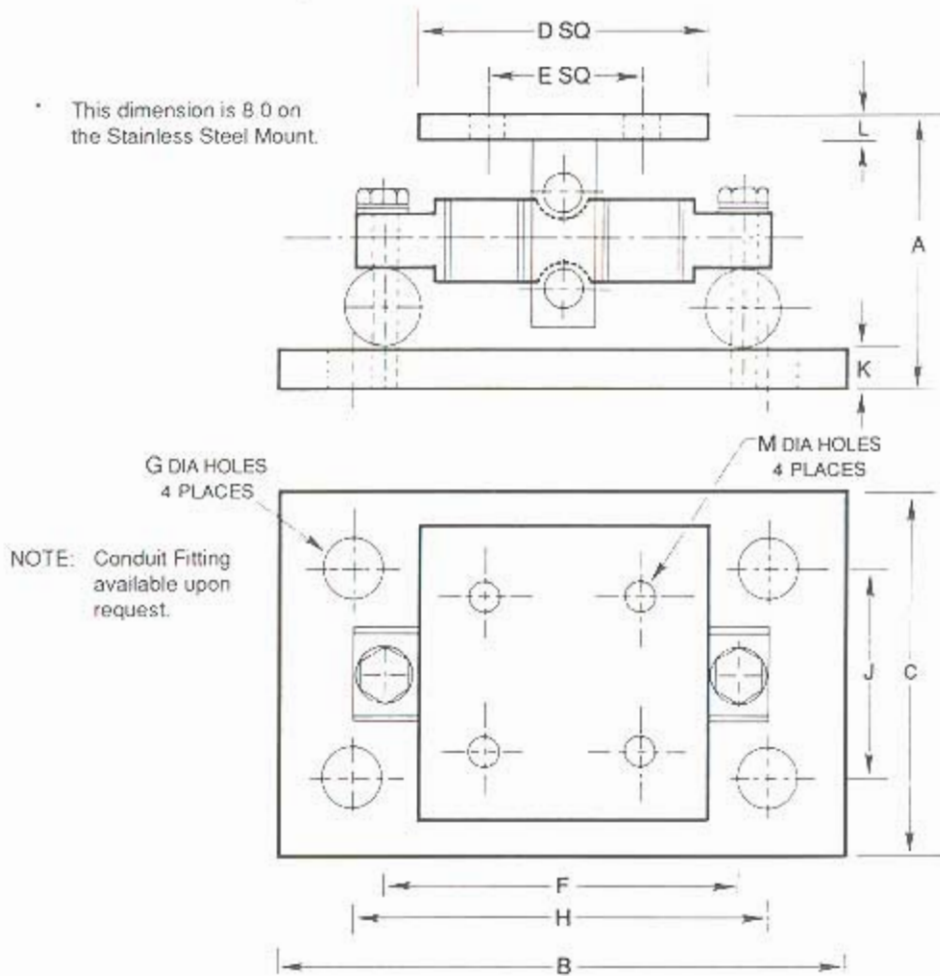
- 5k to 60k pound capacities
- Available in stainless steel
- Eliminates check rods in most applications
- Mild steel zinc plated construction
- Bolts directly to tank or hopper leg and floor

## DESCRIPTION:

The WM-II Weighing Module is designed to utilize double ended shear beams for tank and hopper weighing. The module is available in either mild steel (WM-II) or stainless steel (SSWM-II). Loading of the cell is through a collar assembly that protects the cell from side load induced errors caused by tank or hopper expansion. This design also "locks" the tank or hopper to the weigh module thereby eliminating the need for check rods in most applications. The WM-II is designed to use the Artech 70210 or SS70210 load cells.

CAPACITY LBS.	A	B	C	D SQ	E SQ	F	G	H	J	K	L	M
5K - 20K	5.31	11.0	7.50	5.5	3.0	6.875	1.06	8.0	4.0	.75	.50	.56
30K - 60K	8.43	15.0	10.0	8.0	5.13	8.5	1.19	11.5	6.0	1.0	.75	.69
100K - 150K	10.38	18.0	12.0	10.0	7.5	9.5	1.38	14.0	9.0	1.25	1.25	.81

For higher capacity mounts up to 250K consult factory.



### ORDER INFORMATION:

ARTECH is dedicated to maintaining adequate inventories of its Load Cells to provide the best service in the industry.

Order by the model number and indicate the capacity required.

Custom services such as matched load cell outputs, special threading and custom calibrations are available on an optional basis at an extra cost. LET US KNOW WHAT YOU NEED...WE LISTEN!

*Represented by:*

**ARTECH**  
INDUSTRIES INC.

1966 Keats Drive, Riverside, CA 92501  
(909) 276-3331  
(800) 654-8181 out of CA  
Fax: (909) 276-4556

**QUALITY • PERFORMANCE • SERVICE**

**"A PREFERRED NAME IN LOAD CELL TECHNOLOGY"**