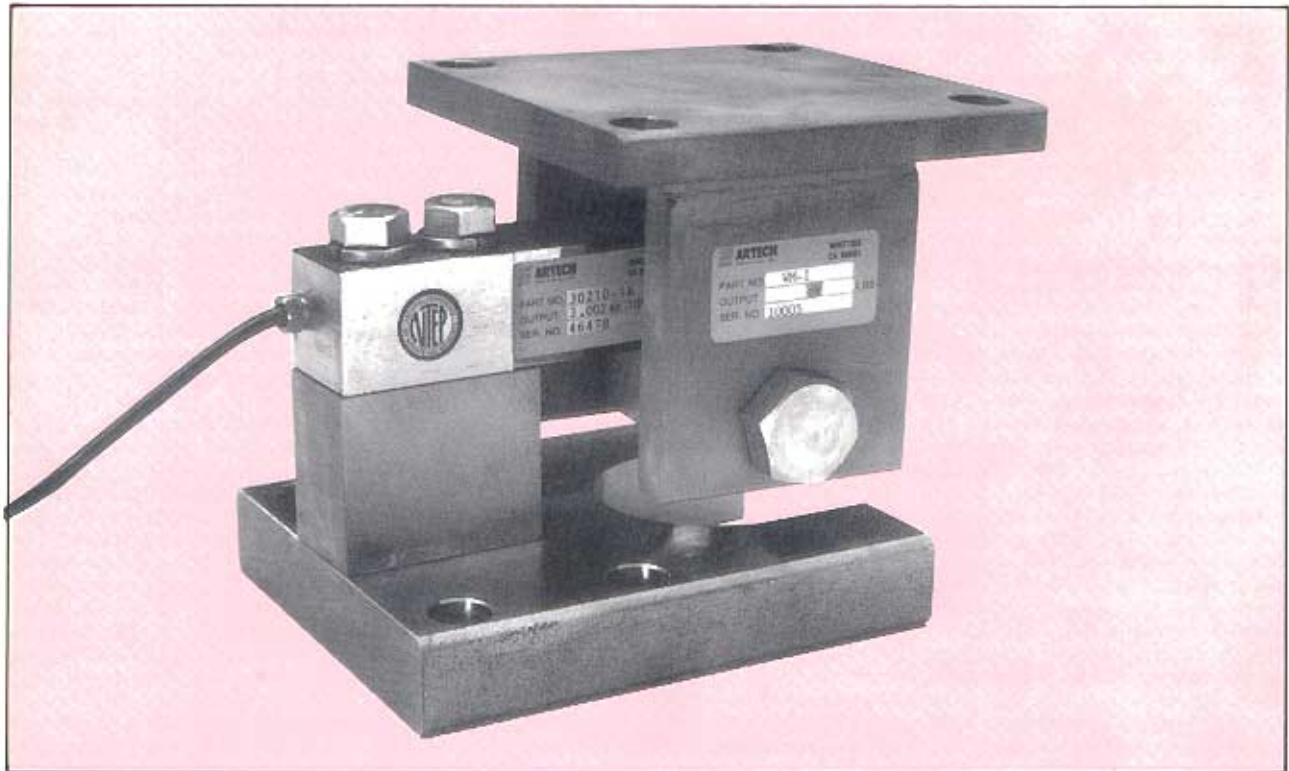


# WM-I

WEIGHING MODULE

DESIGNED TO UTILIZE  
SINGLE ENDED BEAMS  
FOR TANK WEIGHING



## FEATURES:

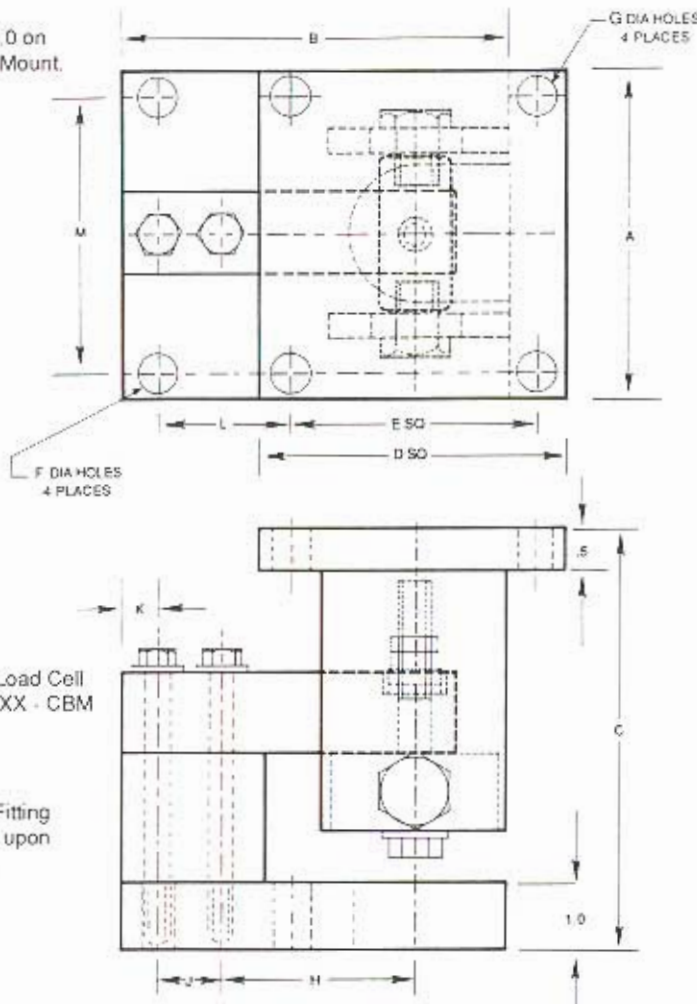
- 1k to 10k pound capacities
- Available in stainless steel
- Eliminates check rods in most applications
- Mild steel zinc plated construction
- Bolts directly to tank or hopper leg and floor

## DESCRIPTION:

The WM-I Weighing Module is designed to utilize single ended shear beams for tank and hopper weighing. The module is available in either mild steel (WM-I) or stainless steel (SSWM-I). Loading of the cell is through a rod and spherical washer assembly that protects the cell from side load induced errors caused by tank or hopper expansion. The assembly is designed for the Artech 30210 Shear beam but will also accommodate the Artech SS30510 which is a direct replacement for the HBM-BLC.

CAPACITY LBS.	A BASE	B PLATE	C	D SQ	E SQ	F	G	H	J	K	L	M
1K - 5K	5.0	6.0	5.62	5.0	4.0	.62	.62	3.0	1.0	.60	2.0	4.0
5KLE - 10K	5.0	7.75	6.62	5.0	4.0	.62	.62	3.75	1.5	.75	3.0	4.0

\* This dimension is 8.0 on the Stainless Steel Mount.



NOTE: When ordering Load Cell specify 30210 - XX - CBM

NOTE: Conduit Fitting available upon request.

### ORDER INFORMATION:

ARTECH is dedicated to maintaining adequate inventories of its Load Cells to provide the best service in the industry.

Order by the model number and indicate the capacity required.

Custom services such as matched load cell outputs, special threading and custom calibrations are available on an optional basis at an extra cost. LET US KNOW WHAT YOU NEED...WE LISTEN!

*Represented by:*

**ARTECH**  
INDUSTRIES INC.

1966 Keats Drive, Riverside, CA 92501  
(909) 276-3331  
(800) 654-8181 out of CA  
Fax: (909) 276-4556

**QUALITY • PERFORMANCE • SERVICE**  
**"A PREFERRED NAME IN LOAD CELL TECHNOLOGY"**